

Bromley Community Safety Partnership Strategy

2020 to 2023



A partnership of



MAYOR OF LONDON
OFFICE FOR POLICING AND CRIME

NHS
South East London
Clinical Commissioning Group

National
Probation
Service 

L F B
LONDON FIRE BRIGADE



**METROPOLITAN
POLICE**

London
Community Rehabilitation Company 
PROBATION

Contents

3

Foreword

4

The Safer Bromley
Partnership Board

5

What did our residents
say?

6

Metropolitan Police
Reported Crime Data

7

Our four priorities

8

Priority 1:
Safer neighbourhoods

10

Priority 2:
Violence Against
Women and Girls

12

Priority 3:
Keeping young
people safe

14

Priority 4:
Stand together against
hate crime and extremism

16

How will we know
we are on track?

17

Supporting strategies
and plans

Foreword

We are pleased to introduce the Safer Bromley Partnership (SBP) Community Safety Strategy 2020-2023, which incorporates the Community Plan and the Crime Reduction Strategy into a single document.

It has been produced by the Community Safety Team on behalf of the SBP, and the overarching aim for the Partnership is for Bromley to continue to be one of the safest boroughs in London. In attempting to maintain and indeed improve Bromley's current position, broad strategic themes have been identified as priorities within this strategy. This enables flexibility in responding to changing crime trends and any emerging issues. Delivery will be reviewed annually in line with Bromley's annual strategic assessment and local trends, to ensure that delivery reflects need whilst also maximising opportunities for joint working across the borough.

Delivering on the priorities outlined in this strategy requires a range of partner organisations working together, to share the skills, powers and resources that are available to them. The SBP has established a structure that brings together partners at a strategic, performance and operational level, that of the Safer Bromley Partnership Board (SBPB). The SBPB holds the overarching responsibility for the SBP Strategy, and works closely with other key strategic boards, to support the delivery of the priorities set out in this strategy. Issues such as violence against women and girls, tackling serious violence and keeping children and young people safe, requires a safeguarding focus and long term interventions, to ensure that the underlying causes are addressed. To be effective, a number of the priorities, cross cutting themes and emerging trends outlined in the plan are shared across the strategic partnerships. As such, the intention within the SBP Strategy is not to provide comprehensive, prescriptive detail on Partner actions, but to provide a broad outline of Partner ambitions in supporting the priorities within, and further signpost the Partner Strategies, Policies and Plans that contain their respective detailed actions (page 16).

Since the publication of the last strategy in 2017, the Metropolitan Police introduced a new policing model, and created 12 Basic Command Units (BCUs), which replaced the previous 32 borough model. Bromley, Sutton and Croydon now form the South BCU, which is the largest in the MET. As the SBP Board recognises that crime practices often extend beyond geographic boundaries, and can impact on several geographical locations, the partnership will focus on an intelligence led approach to tackle any cross boundary issues that may affect the residents of this borough.

Finally, every member of the community has a role to play in reducing the negative impacts caused by crime and disorder and the challenges we are facing, and we will look to increase our work with communities to assist us in our ambition to keep Bromley a safe borough, now and for future generations.

The Safer Bromley Partnership Board

This SBP Board comprises of statutory and non statutory partners. It brings the organisations together so that they can cooperate at a strategic level to improve community safety outcomes for the residents of Bromley.

The Board has the responsibility for developing a Strategy that delivers the priorities determined by MOPAC, as well as those that are important to our residents.

Our partners

London Borough of Bromley

London Community Rehabilitation Service

London Fire Brigade

Mayor's Office Police and Crime (MOPAC)

Metropolitan Police Service

National Probation Service

South East London
NHS Clinical Commissioning Group

Non-statutory partners

We chose our priorities by:

- Incorporating the agreed Borough specific priorities within the Policing and Crime Plan 2017-21, as determined by MOPAC, and undertaking a strategic assessment of crime data.
- Taking the concerns of residents into account through analysis of the results of the Crime Survey, which highlighted those issues that impact on their quality of life.
- Considering collective partnership impact, and identifying areas of work where the Partnership is best placed to have the largest cooperative impact, due to cross cutting and coordinated themes.
- By considering impact on victims, as some crimes have a more significant impact on a victim than others, for example, the differing impact of shoplifting compared to that of residential burglary or domestic violence are hugely contrasting for a victim.

What did our residents say?

In 2019 the Council's Community Safety Team surveyed our residents to find out what their concerns and perceptions were.

Percentage of residents who thought the following were a serious problem:



82%

burglary



53%

criminal damage



43%

drug use



61%

fraud



47%

gangs



21%

hate crime



42%

knife crime



82%

motor vehicle theft

Percentage of residents that felt:



88%

safe in their local
area during the day



54%

alone in their area
after dark

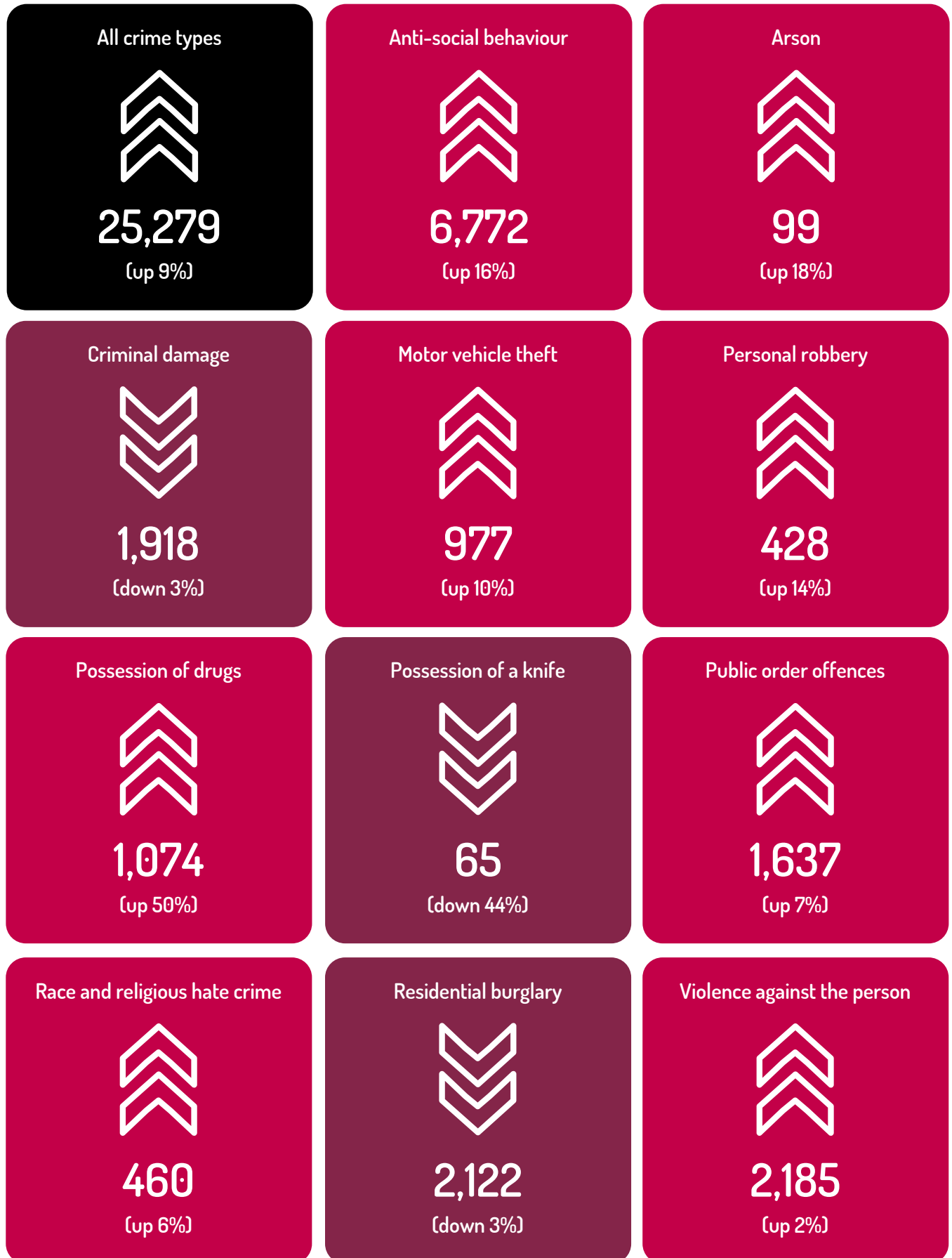


72%

safe on public
transport

Metropolitan Police Reported Crime Data

showed us that between February 2019 and January 2020



Our four priorities



Safer neighbourhoods



Violence Against
Women and Girls



Keeping young people
safe



Stand together against
hate crime and extremism

Each priority has associated delivery mechanisms to drive them forward, and will be reviewed annually to ensure that they are relevant, and monitored periodically to determine progress. If priorities are changed in the future this document will be updated to reflect them.



Priority 1 Safer neighbourhoods

This Priority looks at the crime and anti-social behaviour (ASB) that concern our residents the most, and that MOPAC has identified as relevant to our borough. We will tackle issues across the borough as well as targeting resources on those areas that are highlighted as hot-spots through either the highest levels of crimes reported, or through noted increases. Our aim will be to reduce crime, reduce ASB and improve the confidence of residents and provide reassurance. There are key inter-relationships between this priority and our other three priorities.

Our aim

To achieve reductions in the following crimes that are deemed by MOPAC, the Police and residents to be local priorities:

- Non-domestic violence with injury
- Residential burglary
- Crime against the elderly and vulnerable (financial abuse)
- Anti-social behaviour

What we will tackle

We will take a joint problem solving approach in respect of those crimes that affect our residents and businesses the most, including:



Non-domestic violence with injury

Establishing a specific Police led tasking group to tackle and reduce violent crime. Taking an intelligence led partnership approach to tackle violent crime, serious youth and gang violence and hate crime to develop taskings, and further deliver against the actions within any associated plans or strategies pertaining to these issues.



Residential burglary

Establishing a specific Police led tasking group to tackle and reduce residential burglary and also theft of and from motor vehicles in identified hotspots.



Crime against the elderly and vulnerable (financial abuse)

Working with all stakeholders to protect older and otherwise vulnerable residents from scams and doorstep crime.



Anti-social behaviour

Managing high volume and problematic areas of anti-social behaviour including fly-tipping.

How we will do



Improve partnership and stakeholder engagement and collaboration

Through improved communication between all interested parties, to ensure that stakeholders have the opportunity to provide feedback on their concerns, and that the work of partners is optimised through aligning strategic aims, targeting resources based on evidence, and by avoiding duplication. A framework will be established for consultation and engagement with partners and the wider community through networks, meetings and other mechanisms (email, bulletins etc). Community Impact days will continue to be held 12 times a year, to tackle anti-social behaviour hot-spot areas for reductions in issues including: fly-tipping, arson, carrying of weapons, nuisance mopeds etc, and neighbourhood policing teams will be used to better protect and support vulnerable children and adults.



Use an intelligence led approach

Through use of data analytical tools and partnership tasking groups (such as Tactical Tasking Coordination Group and Joint Action Group), to track and respond to local crime trends in real time, and to provide local input to develop appropriate responses to Borough concerns. This will include the development of a bespoke intelligence package, and the introduction of specific police tasking teams. These teams (the Serious Inquisitive Crime Team and the Violence Reduction Team), will be dedicated to reduce local priority crimes including non-domestic violence with injury, residential burglary, motor vehicle theft, and anti-social behaviour in general.



Make use of legislation

Through appropriate use of the powers within various Acts including the Environmental Protection Act 1990 and Antisocial Behaviour Crime and Policing Act 2014, to ensure that all available remedies are considered, including the use of Dispersal Orders, Community Protection Warnings, Community Protection Notices, Public Space Protection Order and dispersal orders, subject to a balanced approach involving support and treatment outreach services and enforcement where necessary.



Reducing violence

Through delivering the work streams within the Violence Reduction Action Plan, the Gang Violence Matrix, the Violence Against Women & Girls strategy, the Youth Justice Strategy and the Police led Violence Reduction Team.



CCTV

Through ensuring the effective use of public space CCTV on targeted areas as determined by intelligence, and the investment in new deployable cameras.



Reduce risk of financial abuse of the elderly or vulnerable

Through targeted communications campaigns and enforcement.



Priority 2

Violence Against Women and Girls

This priority looks at protecting women and girls from violence. Too many women and girls suffer harassment, abuse and violence on a daily basis; whether at the hands of partners, family members or strangers, this is always unacceptable. We support Mayor's Office for Policing & Crime in their stance of taking a zero-tolerance approach wherever this violence and abuse takes place, with meaningful support for victims and survivors, and significant consequences for perpetrators. This does not mean that we diminish or ignore the suffering experienced by men and boys. The services we commission will support victims and survivors whatever their gender. The Metropolitan Police Service has made tackling domestic abuse a high priority, and has a dedicated unit within the Borough Command Unit. They will investigate all instances of domestic abuse, even in cases where a victim has not reported it themselves. There are key interrelationships between this priority and our other priorities.

Our aim

To reduce violence against women and girls, change the culture that allows this to happen, and empower them to take control, in doing so we will:

- Better protect women and girls
- Improve support for those affected
- Target offenders

What we will tackle

We will take a joint problem solving approach to better protect women and girls in the borough by:



Prevention

Changing attitudes and preventing violence by raising awareness through campaigns, safeguarding and educating children, early identification, intervention and training.



Provision

Assisting survivors to get on with their lives by providing effective provision of services, advice and support.



Partnership

Developing a coordinated multi agency approach by ensuring that the response to domestic abuse is shared by all stakeholders.



Protection

Providing an effective criminal justice system by working towards effective prosecution, supporting victims and providing perpetrator interventions.

How we will do



Provide strategic direction

By refreshing the Violence Against Women & Girls 2016- 2019 strategy and update the Domestic Homicide Review protocol.



Communicate

By developing a communication plan to increase awareness of the services Violence Against Women & Girls provide. Tackle under-reporting through media engagement, partnership and information sharing between professionals (particularly health), and engaging the third sector including campaign groups.



Take an intelligence led approach

By improving the response to victims by developing mechanisms to capture data in addition to that provided by the Police, to enable accurate mapping of the prevalence of Violence Against Women & Girls and implement appropriate responses and services where needed.



Protect high risk victims

By supporting them through an effective and robust Multi Agency Risk Assessment Conference (MARAC), implementing any learning points from Domestic Homicide Reviews, and by ensuring that all local domestic violence services are aware of the relevant support services that are available, including: The One Stop Shop , Outreach Support and the Domestic Violence Intervention Programme (DVIP).



Make use of legislation

To ensure that perpetrators of violence against women and girls are held accountable according to the law, and are provided with assistance to change their abusive behaviour in order to prevent them from causing harm or violence to their current, past or future partners.



Work in partnership

With Children's Social Care and Children's Early Intervention Teams to provide support, advocacy and deliver age appropriate work in a range of educational, youth and community settings.



Priority 3

Keeping young people safe

Our ambition is for our borough to be safe for our children and young people, where they can grow up, thrive and have the best life chances in families who flourish, and are happy to call Bromley home. To achieve this we want to improve neighbourhoods affected by anti-social behaviour and crime. We want to reduce crimes that cause the most harm to children and young people, by preventing them through early intervention (where possible) for those who are at risk of offending, or re-offending. There are key interrelationships between this priority and our other priorities.

Our aim

To improve outcomes and life chances for children and young people in contact with the youth justice system, or at risk of becoming involved in crime and anti-social behaviour by:

- Reducing the number of first time entrant children in the youth justice system, and reduce re-offending
- Reducing the number of knife crimes, by volume and repeat victims and reduce levels of serious youth violence
- Preventing and reducing substance misuse

What we will tackle

We will work with partners to take a holistic approach to address the issues that can compromise the safety of our young people through the delivery of the prevention and support programme by:



Reducing first time entrants into the criminal justice system and by reducing reoffending

Supporting young people on the cusp of offending through the offer of the prevention support programme, through providing support to parents, and working closely with our probation partners.



Reducing the number of knife crimes and levels of serious youth violence

Diverting, disrupting and preventing those at risk of serious youth violence and gang involvement becoming tomorrow's offenders.



Enforcing against businesses that sell age restricted products to children and young people

Detering businesses from selling age restricted products to young people with the intention of improving community safety and public health

How we will do



Provide support

By setting up an in-house Prevention Support Programme working closely with Community Safety and Children's Social Care to assist children early away from offending, and publish a serious youth violence toolkit. Also by delivering the cross cutting key actions within the Youth Justice Strategy 2019-21 and the Serious Youth Violence strategy 2018.



Work with partners to disrupt gangs

By tracking and sharing information on those young people who have associations with gangs, through the weekly Missing, Exploited, Gang Affiliated (MEGA) meetings. In addition by providing gang awareness training and by supporting young people to exit gangs, as well as applying for gang injunctions where appropriate.



Work with partners to tackle knife crime, serious youth violence, child exploitation and anti-social behaviour

By delivering the knife crime intervention programme for young people who carry weapons, working on a robust approach to prevention in identifying young people through Merlin reports, and using partnership taskings to develop and deliver the Violence Reduction Action Plan. By working with partners to recognise that child exploitation must also be understood in terms of its connectivity with a wider range of vulnerabilities that young people can be exposed to, including: harmful sexual behaviours, missing children, gang involvement and youth crime. By working in partnership with the Police Anti-Social Behaviour Team, and schools to address anti-social behaviour issues, through the adoption of an early intervention approach, that utilises informal approaches that can be escalated to formal enforcement where necessary or appropriate.



Carry out joint operations with Trading Standards, Licensing and Police

By delivering a programme of test purchasing in respect of age-restricted legislation pertaining to products and activities including, sale of alcohol, cigarettes knives, as well as underage gambling and drinking on licensed premises.



Priority 4

Stand together against hate crime and extremism

This Priority focuses on work to tackle those crimes that are motivated by malice or ill-will towards a social group, on the basis of race, religion, sexual orientation, disability or gender identity or other protected characteristic.

Communities that are divided and fearful are more susceptible to intolerance, hatred and targeting. In addition to the aforementioned often targeted groups, there is emerging recognition that financial abuse of the elderly (or otherwise vulnerable residents) should also be considered as a hate crime, as perpetrators deliberately choose their victims on the basis of the perceived vulnerability that may be associated with their age.

There are key interrelationships between this priority and our other priorities.

Our aim

To improve reporting of hate crime and to reduce repeat victimisation of victims of hate crime.

What we will tackle

We will work protect our vulnerable communities by:



Working to reduce the levels of Hate Crime and repeat victimisation



Working to raise awareness of the issues



Working to gain community support



Working to understand the risks of and journey to radicalisation and extremism



Recognising that targeted financial abuse of the elderly (or otherwise vulnerable) can be also be considered as a hate crime

Stand together against hate crime and extremism

How we will do

**Undertake ongoing analysis**

Use an analysis of hate crimes levels, to ensure increases and trends are identified and tackled early.

**Work in partnership**

In partnership with the Safer Neighbourhood Police together with community and faith groups, work to raise awareness and tackle all forms of hate crime. Maintain a high visibility in the community by delivering talks and awareness raising events; ensure training on how to spot financial abuse is delivered to practitioners within social care, police and other relevant stakeholders; ensure a rapid response service is provided to all urgent requests for assistance.

**Encourage support from communities**

Undertake community tension assessments if needed, and encourage communities to report incidents of hate crime as they occur.

**Continue to fulfil our Channel and Prevent duties**

Process and signpost cases to ensure all requirements are met.

**Support for victims**

Work to support those who are victims of hate crimes.

**Restorative mechanisms**

Explore options for restorative justice mechanisms.

**Protecting victims of doorstep crime or scams**

Recognise that by perpetrators deliberately choosing their victims on the basis of their perceived vulnerability that may be associated with their age (or otherwise) is akin to a hate crime. Provide a 2 hour rapid response service for those residents who are victims of doorstep crime or scams.

How will we know we are on track?



Safer neighbourhoods

- This theme will be included as a substantive discussion item at the Safer Bromley Partnership Board in quarter 1; Police will provide a crime update at each Safer Bromley Partnership Board, and partners will present an end of year update in quarter 4.
- Local data via the Metropolitan Police Service crime dashboard (updated monthly) will be monitored, and Community Safety will attend Tactical Tasking Coordination Group each month to provide input into tasking and analyse effectiveness of responses.
- Local data via the Mayor's Office for Policing & Crime performance framework and monthly updates on high harm crime across boroughs will be monitored to identify trends and developments and analyse effectiveness of responses.
- Police will present an update to the Public Protection & Enforcement Policy Development and Scrutiny Committee every quarter.



Violence Against Women and Girls

- This theme will be included as a substantive discussion item at the Safer Bromley Partnership Board in quarter 2, whereby Violence Against Women & Girls, Police and associated Partners will provide an update. Partners will also present an end of year update in quarter 4.
- The Domestic Violence and Violence Against Women & Girls subgroup will lead on the effective monitoring and scrutiny of partner agencies in their service delivery, present findings within that setting, and report exceptions to the Safer Bromley Partnership Board if they occur.
- Update the Violence Against Women & Girls Strategy and the Domestic Homicide Review Protocol by August 2020.



Keeping young people safe

- This theme will be included as a substantive discussion item at the Safer Bromley Partnership Board in quarter 3; and Partners will present an end of year update in quarter 4.
- First time entrants into custody and re-offending will be monitored through national KPIs. Reports will be made to the Youth Offending Service Board on a quarterly basis highlighting concerns within indicators.
- Youth Offending Service will complete an in depth analysis to identify areas of focus for the above.
- Serious youth violence will be measured by the Mayor's Office for Policing & Crime Weapon Enabled Crime Dashboard and also through local data. Repeats monitored by Mayor's Office for Policing & Crime dashboard and local data.
- Measure success of reduction in weapons crime through published data on Mayor's Office for Policing & Crime performance framework.
- Community Safety will attend and add value at Youth Offending Service Board Missing, Exploited, Gang Affiliated and Multi Agency Child Criminal Exploitation.
- Victims will be monitored by local data over time to look at reductions of numbers.



Stand together against hate crime and extremism

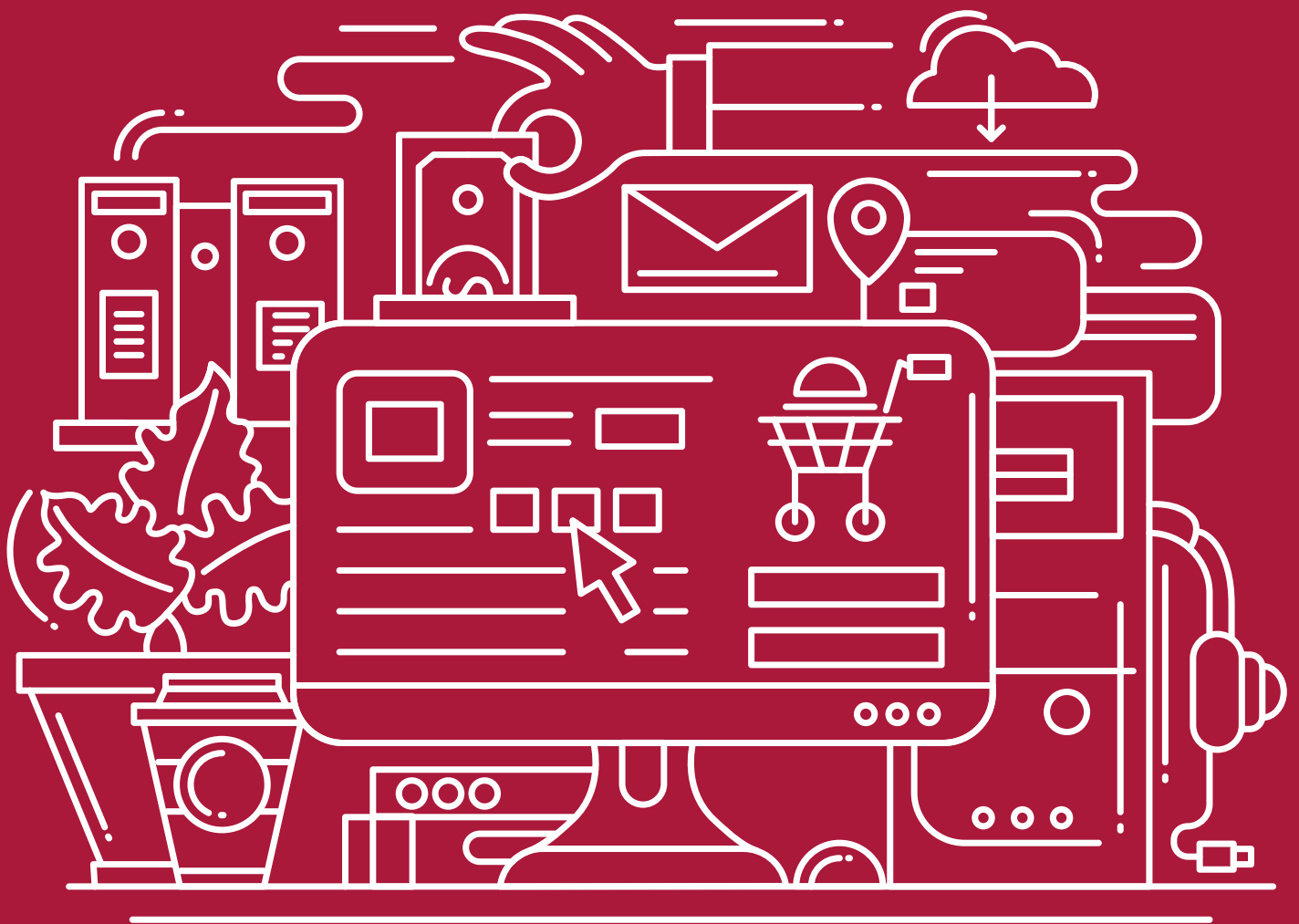
- This theme will be included as a substantive discussion item at the Safer Bromley Partnership Board in quarter 4; Partners will provide an update at each board, and present an end of year update in December quarter 4.
- The Metropolitan Police Hate Crime and Special Crime Dashboard will be used to monitor increased reporting of victims of Hate crime. Data is published into the public domain monthly for each London Borough.
- Data through the Mayor's Office for Policing & Crime Hate Crime Dashboard for figures at a borough level will be monitored.
- Levels of early identification of hate crime and extremism through referrals will be monitored and tracked.
- The number of rapid response calls to the scam hotline, and the associated outcomes will be tracked and monitored.

Supporting strategies and actions plans

Helping to deliver this strategy



Building a Better Bromley	✓		✓	
Children's and Young People's Plan	✓	✓	✓	✓
Police and Crime Plan	✓	✓	✓	✓
Homelessness Strategy	✓	✓	✓	
Child Sexual Exploitation Protocol	✓	✓	✓	✓
Public Protection and Enforcement Portfolio Plan	✓	✓	✓	✓
VAWG Strategy	✓	✓	✓	✓
Youth Justice Strategy	✓	✓	✓	✓
Serious Youth Violence Strategy	✓	✓	✓	✓
Violence Reduction Action Plan	✓	✓	✓	✓
Bromley Safeguarding Adults Board Strategy	✓			✓



For more information, contact:
Environment and Public Protection
London Borough of Bromley
Civic Centre, Stockwell Close
Bromley BR1 3UH

